

# ClickFit

## COMMERCIAL METAL ROOF RACKING SYSTEM

Built on PanelClaw's proven rooftop mounting experience, ClickFit is a streamlined racking platform designed for commercial metal roof PV projects. With gigawatts of ClickFit installed across North America, the system brings a proven track record of performance and reliability. Integrated into PanelClaw's turnkey, end-to-end service offering, ClickFit provides a highly efficient solution from design through installation. ClickFit is fully compatible with clawOS and is available with U.S. made components for projects seeking the IRA Domestic Content Bonus Credit. The system is compatible with standing seam, corrugated, and trapezoidal metal roofs.



**FOR CORRUGATED & TRAPEZOIDAL ROOFS**

## ENGINEERED FOR SPEED

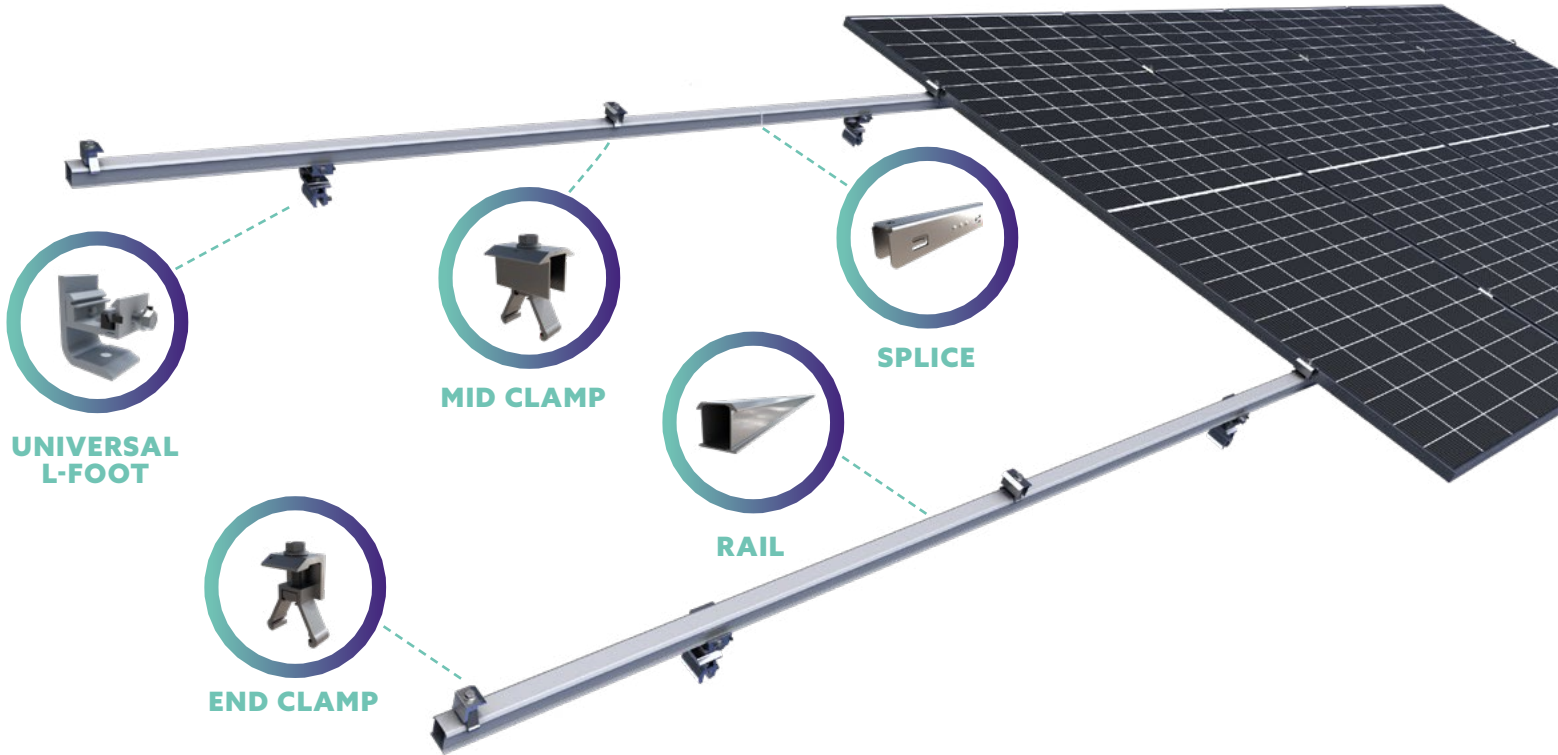
- Fast, single-tool installation
- Click-in rail with pre-installed rail bolt
- Click-on Mid & End Clamps with fully integrated bonding
- Simplified leveling and height adjustment
- Conforms to UL 3741 and UL 2703
- Full suite of accessories and mount options



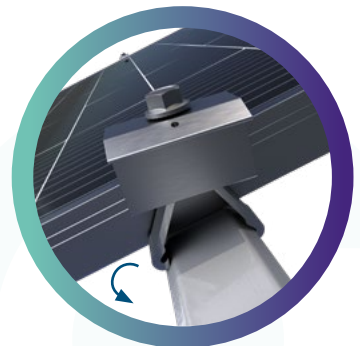
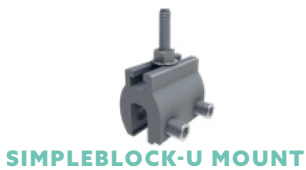
**FOR STANDING SEAM ROOFS**

# ClickFit

## COMPLETE PITCHED ROOF RACKING SYSTEM



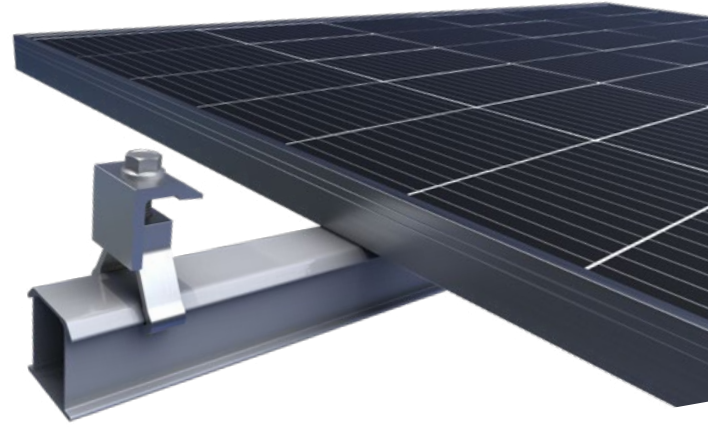
### MOUNTS & ACCESSORIES



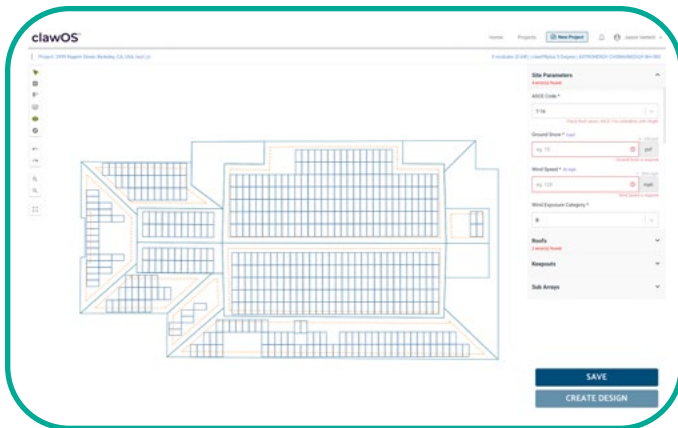
# ClickFit

## SAFETY & RELIABILITY

The ClickFit system has undergone extensive reliability and performance testing and exceeds US code requirements. Our in-house Intertek® certified satellite test laboratory, supported by third-party peer reviews, collectively form the most comprehensive and robust testing framework in the industry.



## CLAWOS SUPPORT



The ClickFit commercial metal roof racking system is fully integrated into PanelClaw's clawOS ecosystem, allowing users to quickly generate complete structural plan sets with automated design tools, optional CAD workflows, and comprehensive permit-ready documentation.

## PRODUCT DETAILS

### APPLICATIONS

Roofs with slope from 1/4:12 to 12:12

### ROOF TYPE COMPATIBILITY

Wide variety of Standing Seam and corrugated metal types. Compatible with various third party roof mounts, including S-5!

### PLATFORM LOAD

~ 2.0 psf

### MODULE ORIENTATION

Portrait

### MODULE ATTACHMENT

Top clamp on longside

### BASIC WIND SPEED

Up to 190 mph ASCE 7-22 (>190 mph by approval)

### WIND EXPOSURE CATEGORY

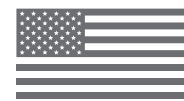
B and C (D with review)

### USGS SEISMIC CATEGORIES

A, B, C, D (others require engineering review)

### WARRANTY AND CERTIFICATIONS

25 year warranty  
ANSI/UL 2703-2015 Listed  
System Fire Rating  
Class A with Module Types



**FEOC FREE &  
DOMESTIC CONTENT  
OPTIONS AVAILABLE**