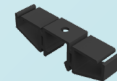


PANELCLAW WIRE MANAGEMENT

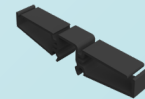
CLAWFR WIRE MANAGEMENT SUITE

PanelClaw's wire management suite simplifies the installation of rooftop PV electrical systems. The accessories snap on or quickly bolt to pre-punched mounting holes, offering a turnkey solution that is easy to standardize across all projects. The Wire Clip installs tool-free, streamlining wire management underneath modules along array rows. The Wire Router conveniently bolts to the Base to protect string wiring from the elements in between array rows.



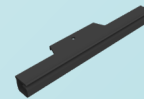
HOMERUN CLIP & COVER

Accommodate up to (24) #10 wires or (16) #8 wires.



HOMERUN CLIP & COVER XL

Accommodate up to (50) #10 wires or (32) #8 wires.



WIRE ROUTER

The Router bolts to the Base allowing installers to protect up to 4 #10 string jumpers from the elements.



WIRE CLIP

The Clip snaps on to the Rail underneath the module and allows for up to 8 #10 wires.

WIRE CLIP

WIRE CLIP

WIRE ROUTER



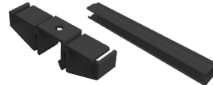
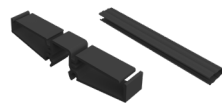
ENGINEERED FOR:

clawFR[®]

clawFRplus[™]

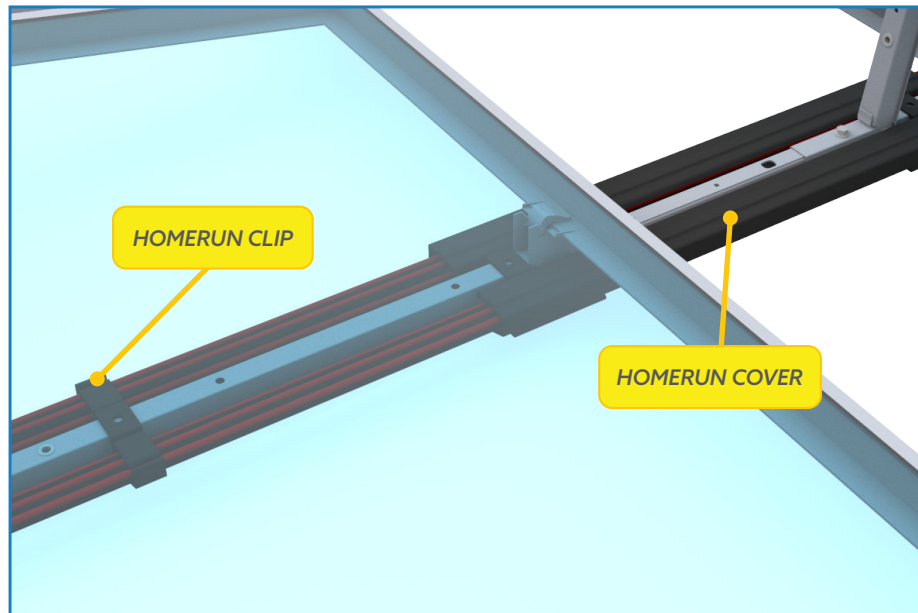
PANELCLAW

WIRE MANAGEMENT

	WIRE CLIP 	WIRE ROUTER 	HOMERUN CLIP + COVER 	HOMERUN CLIP + COVER XL 
Part Number	5000226	500022501	5000628 500062302	5000766 5000767
#10 2kV PV Wires	8	4	12 (Per Side)	25 (Per Side)
#8 2kV PV Wires	5	2	8 (Per Side)	16 (Per Side)
Uses	Under the module along rows to connect modules	Between rows to protect jumpers and module connections	Between rows to route homeruns	Between rows to route homeruns

LARGE CAPACITY WIRE MANAGEMENT

The Homerun Clip & Cover snap onto the Module Connector and efficiently secure homerun wires. This accessory is available in two different sizes. The double-sided clip positions system wiring above the roof deck while clearing the low edge of the modules and Deflectors. The dual channel design and clearance above the roof deck minimizes DC losses compared to other raceway solutions. The cover protects wires from UV damage between rows and when exiting array fields on northern and southern array edges.



clawFR[®] clawFRplus[™]



MADE IN THE USA

(978) 688.4900 | SALES@PANELCLAW.COM | PANELCLAW.COM