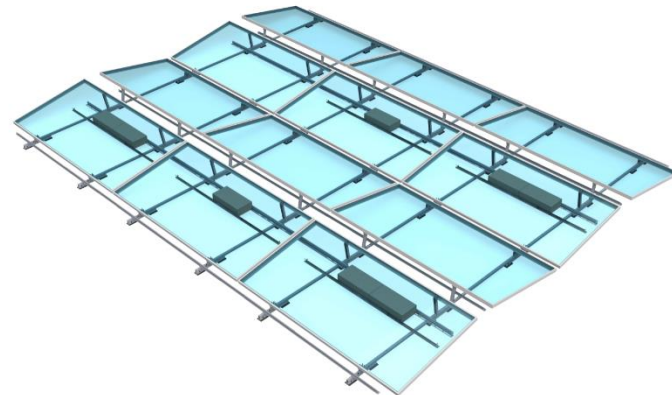


## clawFRplus™ Dual Tilt Design Specifications, Rules and Guidelines





# Specifications: clawFRplus™ Dual Tilt

<b>Roof Loading</b>	2.5 psf to 13 psf (12.2 kg/m <sup>2</sup> to 63.5 kg/m <sup>2</sup> ) including racking, modules and ballast
<b>Roof Slope</b>	5° max slope (1/12 pitch) in all directions Up to 7° (1.5 / 12 pitch) possible with engineering review
<b>Wavy Roofs</b>	clawFRplus can span up to 3° in undulation in any two directions This system is not designed to go over roof crickets
<b>Wind Speed</b>	190 mph (306 km/h) – 3 second gust per ASCE 7-16 (150 mph per ASCE 7-05) Higher wind speeds require PanelClaw engineering review
<b>Exposures</b>	ASCE wind exposure categories B, C and D
<b>Seismic Design Category</b>	USGS seismic design category A, B, C, D Seismic zones beyond D can also be evaluated upon request
<b>Maximum Building Height</b>	No Limitations
<b>Roof Material</b>	EPDM, TPO, PVC, Mod Bitumen, Asphalt, Coal Tar, Foam, Concrete, and Gravel Loose gravel and/or river rock must be cleared out from under clawFRplus bases
<b>UL/ANSI 2703-2015 Grounding &amp; Bonding</b>	UL LISTED – Will accommodate max module fuse rating of 40 amps. Typical module fuse rating is ~15 amps
<b>UL/ANSI 2703-2015 Mechanical Load</b>	UL LISTED – Racking components meet electrical and mechanical requirements of standard System load rating is always module dependent (module allowable loads are typically the limiting factor)
<b>UL/ANSI 2703-2015 Fire Listing</b>	System Fire Rating Class A with Type 1, 2, 16, 19, 22, 25, 29, and 30 modules No additional components required for compliance for these module types
<b>Ballast Block Size</b>	Nominal 2"x 8"x 16", 3"x 8"x 16", or 4"x 8"x 16" blocks Actual dimensions: 1 5/8" or 2 5/8" or 3 5/8"x 7 5/8"x 15 5/8" with +/- 1/8" tolerance

# Row Spacing and Roof Coverage Ratio: clawFRplus™ Dual Tilt

Dimensions shown below vary by module except the Row-Row Gap, which is fixed.

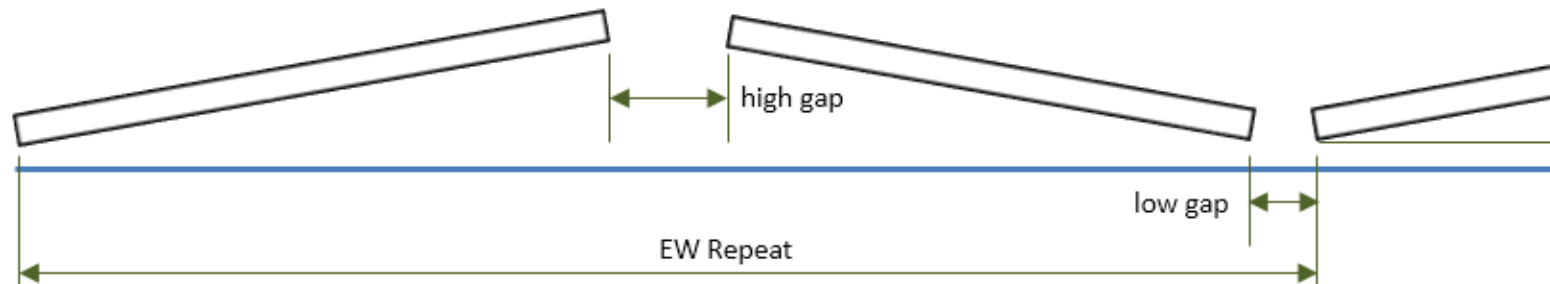
Dynamic AutoCAD building blocks are available for any framed module within the range of dimensions below:

Module Width Range: 990-1150 mm, 1270-1310 mm <sup>1</sup>

Module Length Range: 1815-2500 mm

Configuration Name	Example clawFRplus 10 Degree DT dimensions based on a module width of 1310 mm [51.57 in]					Example clawFRplus 10 Degree DT dimensions based on a module width of 1130 mm [44.49 in]				
	Tilt Angle [degrees]	Roof Coverage Ratio	Low Side Module Gap	High Side Module Gap	E-W Repeat	Tilt Angle [degrees]	Roof Coverage Ratio	Low Side Module Gap	High Side Module Gap	E-W Repeat
clawFRplus DT-22cm (10 in)	7.8	92%	2.17 in [55 mm]	7.20 in [183 mm]	111.6in [2834 mm]	9.0	91%	2.09 in [53 mm]	7.64 in [194 mm]	97.6 in [2480 mm]

Repeat N-S dimension is fixed for every configuration as: Module Length + 0.71 in [18mm]



<sup>1</sup> At the time of this document's publication, no modules in the US market are in the width range of 1151 mm – 1269 mm. Contact PanelClaw if you're considering a new module in this range.

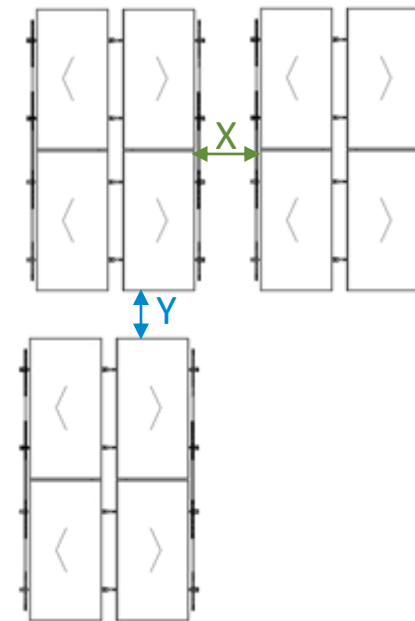
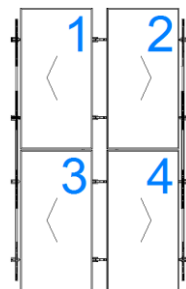


# Array Layout Rules: clawFRplus™ Dual Tilt

These array layout guidelines were developed to maximize the performance of clawFRplus over its 25+ year lifespan.

Nonconforming arrays may require layout modifications, may not be ballast-able, or may require mechanical attachments.

- ▶ clawFR Dual Tilt system must have an even number of modules in east/west direction, ending all columns with the module low side
- ▶ Minimum setback from roof edges - 4 ft (1.2 m)
- ▶ Maximum array row/column length:
  - ▶ For Roof Slope > 2 degrees: 80 ft (24.4 m)<sup>1</sup>
  - ▶ For Roof Slope ≤ 2 degrees: 150 ft (45.7 m)
- ▶ Minimum clearance from obstructions<sup>2</sup>: 6 in (153 mm)
- ▶ Minimum module-to-module clearance between sub arrays<sup>2</sup>:
  - ▶ See Table
- ▶ Avoid going over existing pipes, lighting rods/cables or vents on the roof
- ▶ Minimum array size **2 x 2 modules** (2 x 1 domes)



Row Spacing	X, Min. Module-to-Module Clearance	Y, Min. Module-to-Module Clearance
10 in [22 cm]	16.5 in [419 mm]	8 in [203 mm]

<sup>1</sup> Adjacent subarrays can be grouped with a minimum module-to-module clearances as long as those groups of subarrays do not exceed 150' x 150' IBC fire code requirements

<sup>2</sup> Unless otherwise specified in DMPV analysis for unattached designs



## **Layout Recommendations for Reducing Weight and/or Mechanical Attachment Counts**

---

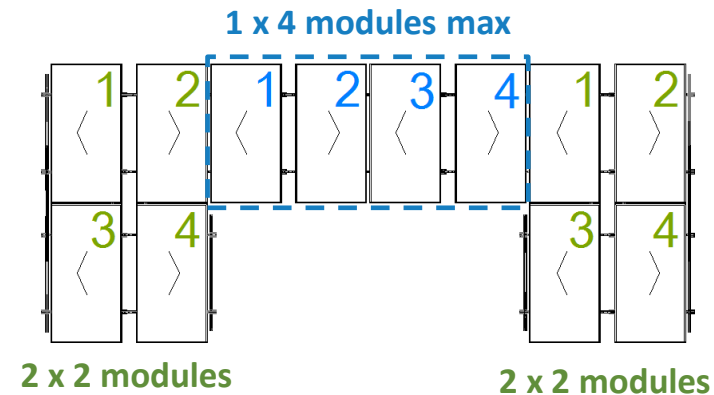


## Minimize the Use of Long “Bridges”

Keep the single module wide “bridges” to no more than **1 x 4 modules (1 x 2 domes)**.

“Bridges” more than 4 single modules long will require additional ballast and/or mechanical attachments.

If “bridge ends” that are at least **2 x 2 modules (or 2 x 1 domes)** on both ends are not present it may result in additional ballast and/or mechanical attachments.

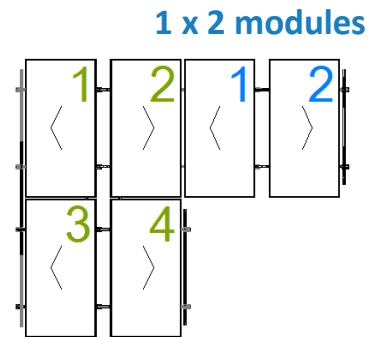




## Limit “Peninsulas” to No More Than Two Modules Long

Keep “peninsulas” to no more than **1 x 2 modules (1 dome)**.

“Peninsulas” that are more than 2 module long will require additional ballast and/or mechanical attachments.





**For Questions or Feedback Contact [sales@panelclaw.com](mailto:sales@panelclaw.com) or call us at (978) 688-4900**

---